

Accessory

for Diaphragm Valves with piston actuator

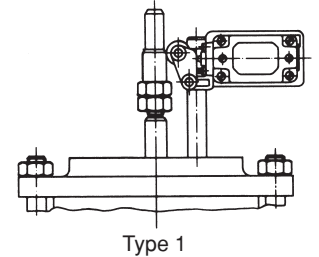
Electrical Limit Switches for Diaphragm Valves with piston actuator

Encapsulated Limit Switches with Roller Lever for lateral running against cams

Voltage 24 V to 500 V ~, max. 10 A.
Enclosure rating IP 65 to DIN 40 050.

Type 1

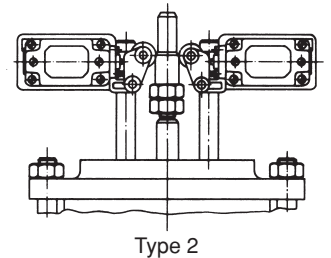
With one mounted limit switch for signalling the OPEN or CLOSED position.
Contact equipment: one make + one break contact (crawling contacts).



Type 1

Type 2

With two mounted limit switches for signalling the OPEN and CLOSED positions.
Contact equipment per limit switch: one make + one break contact (snap-action contact).



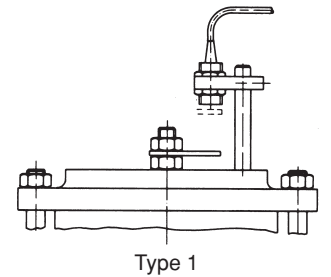
Type 2

Inductive Proximity Switches¹⁾

- a) for direct current ≤ 48 V with tilting amplifier
- b) for direct current intrinsically safe to Namur
- c) for alternating current max. 250 V

Type 1

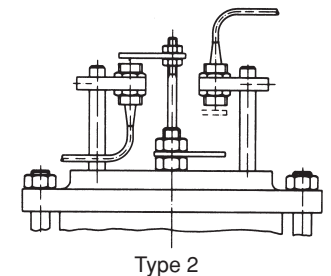
With one mounted switch for making contact in OPEN and CLOSED position.



Type 1

Type 2

With two mounted switches for making contact in OPEN and CLOSED positions.



Type 2

¹⁾ When placing the enquiry or order, please specify;
kind of current, voltage, enclosure rating, and switching capacity.