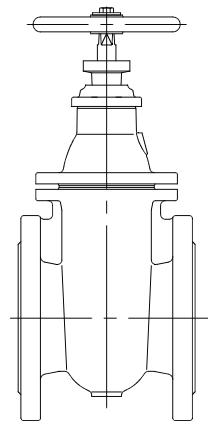


Operating Instructions

Wedge Gate Valve

**Metallically seated,
With Non-rising or Rising Stem**

Operation by means of handwheel, chain-wheel or with square end



- 1 Description of Product and Range of Application
- 2 Performance and Mode of Operation
- 3 Installation into the Pipeline – Mounting
- 4 Initial Operation
- 5 Operation and Application
- 6 Maintenance
- 7 Drawing with spare parts list

These operating instructions must always be used in combination with operating instructions BA01E001!

1 Description of Product and Range of Application

1.1 Wedge Gate Valve, Face-to-face dimension F4, DIN 3352

<u>Sizes</u>	<u>Pressure ratings</u>
40 – 150	PN 10/16
200 – 300	PN 6/10
350 – 500	PN 4/6/10
600 – 700	PN 2,5/4/6
800	PN 1,6/2,5
900 – 1000	PN 1/1,6
1200	PN 1

Prod. No.: 1080....	with non-rising stem
1081....	with rising stem and rising handwheel for DN 150 and smaller
1082....	with rising stem and non-rising handwheel for DN 200 and larger

**Operating Instructions for Wedge Gate Valve, Metallically Seated,
With Non-rising or Rising Stem**

1.2 Wedge Gate Valve, Face-to-face dimension F5, DIN 3352

<u>Prod. No.</u>	<u>DN range</u>	<u>Pressure ratings</u>
2040.... 2041...	40 – 500	PN 25
2070.... 2071....	40 – 1000	PN 16
2060.... 2061....	40 – 1200	PN 10

Prod. No. 2040.... with non-rising stem
 2041.... with rising stem and rising handwheel for DN 150 and smaller
 with non-rising handwheel for DN 200 and larger

1.3 Wedge Gate Valve, Face-to-face dimension F15, DIN 3352

<u>Prod. No.</u>	<u>DN range</u>	<u>Pressure ratings</u>
3000.... inside. 3001.... outside	40 – 1000	PN 16
3020.... inside 3021.... outside.	40 – 1000	PN 25
3022.... inside. 3023.... outside.	40 – 400	PN 40
	1200	PN 10

1.4 Test pressure and admissible working pressure:

Pressure rating PN	Hydr. test pressure for		Max. admissible working pressure in bars at a working temperature of	
	body	seat	max. 120°C for liquids	max. 150°C for liquids+gas ¹⁾
1 1,6 2,5	1,5 2,4 3,75	1 1,6 2,5	1 1,6 2,5	1 1,3 2
4 6 10	6 9 15	4 6 10	4 6 10	3,2 5 8
16 25 40	24 37,5 60	16 25 40	16 25 40	13 22 30

Operating Instructions for Wedge Gate Valve, Metallically Seated, With Non-rising or Rising Stem

1) When equipped with maintenance-free stem sealing: max. 70°C

2 Performance and Mode of Operation

ERHARD-Wedge Gate Valves are metallically seated isolating valves for "ON-OFF" duty. They comply with the standard requirements of DIN 3352 parts 2, 5 and 6. The valve is closed in clockwise direction, e.g. by means of handwheel.

The gate Valve have been tested according to DIN 3230 at the manufactures' works for resistance and tightness. They are suitable for both flow directions.

3 Installation into the Pipeline – Mounting

Remove all packing material from the valve. In order to protect the Gate Valves against damages they have to be transported by means of suitable lifting gears, e.g. broad belts. Do not use chains or ropes. Prior to installation examine the pipeline for impurities and foreign matter and clean it if necessary. The valves can be installed in any position. It is important that they are well accessible for operation and maintenance. For outdoor installation the customer has to protect the valves against direct effects of the weather.

The flange gaskets to be used have to be suitable for the actual working temperature. Steel-reinforced rubber seals are recommended for temperatures below 70°C. During installation of the valve, the distance between the pipe flanges should exceed the face to face dimension of the valve by at least 20mm. Thus, the raised faces will not be damaged and the gasket can be inserted. The mating pipe flanges must be planeparallel and concentric. Tighten the connecting bolts evenly (without distortion) and crosswise. The pipe must not by any means be pulled up to the valve.

4 Initial Operation

After installation, check the valve for smooth operation moving it over the whole travel (OPEN-CLOSED) by means of the handwheel

5 Operation and Application

The valve is operated by means of the handwheel, chain-wheel or square cap. Do not apply excessive forces.

5.1 Inadmissible modes of operation

Continuous operation in throttled position leads to increased wear and tear. The gate valves of this type are suitable for "Open-Closed" operation. For explicit regulating service, special valve types have to be used. Extending the operating elements, e.g. by levers etc is not allowed. The temperature limits for the flow medium must not be exceeded. Do not exceed the limit values for the operating pressure. The nominal pressure is the max. pressure to be applied on the closed valve.

6 Maintenance

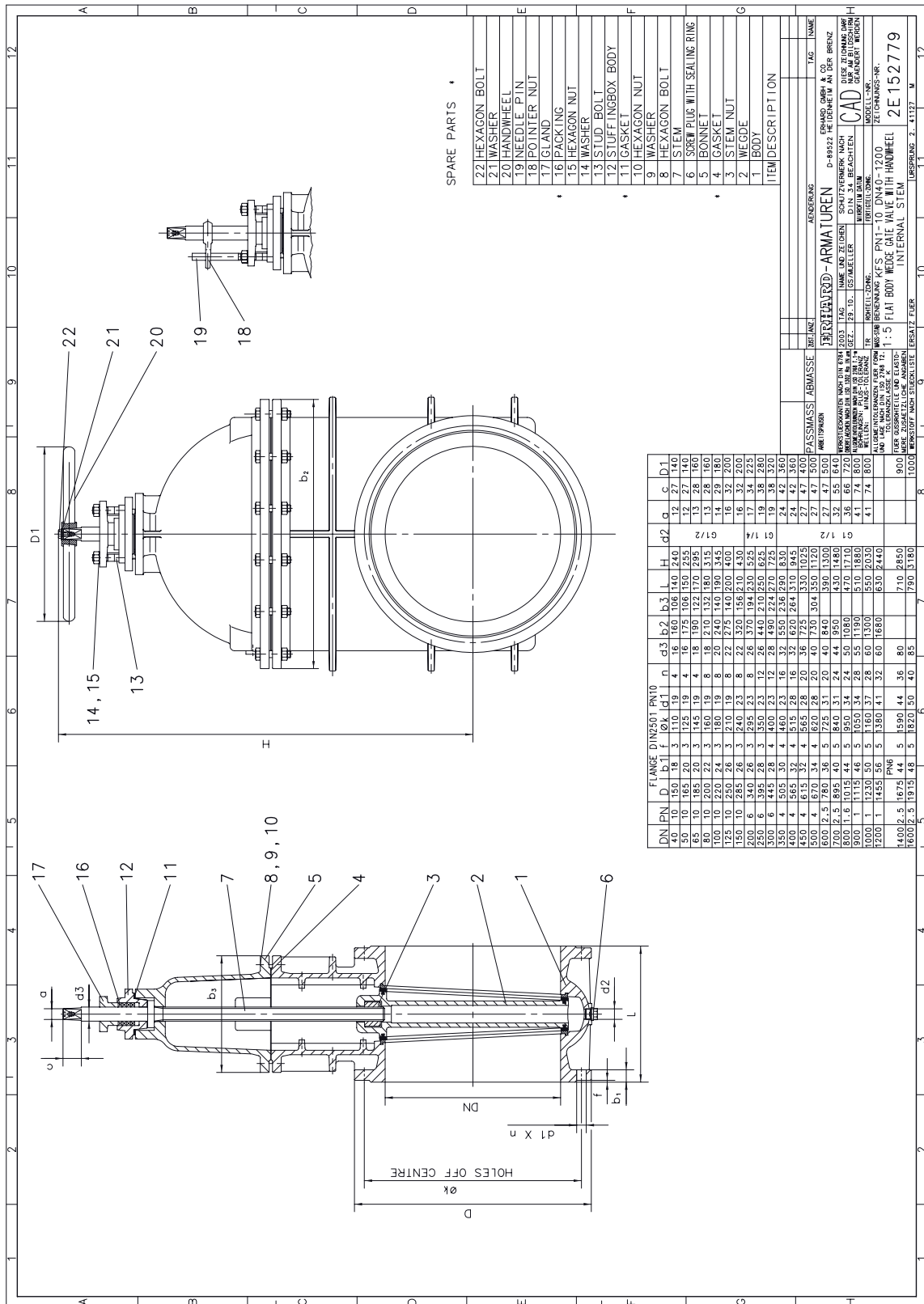
Check for performance and tightness at regular intervals of max. 1 year. The stem parts accessible from the outside have to be greased regularly.

Recommended lubricant:
SYNTHESO PRO AA2

company Klüber Lubrication, Munich

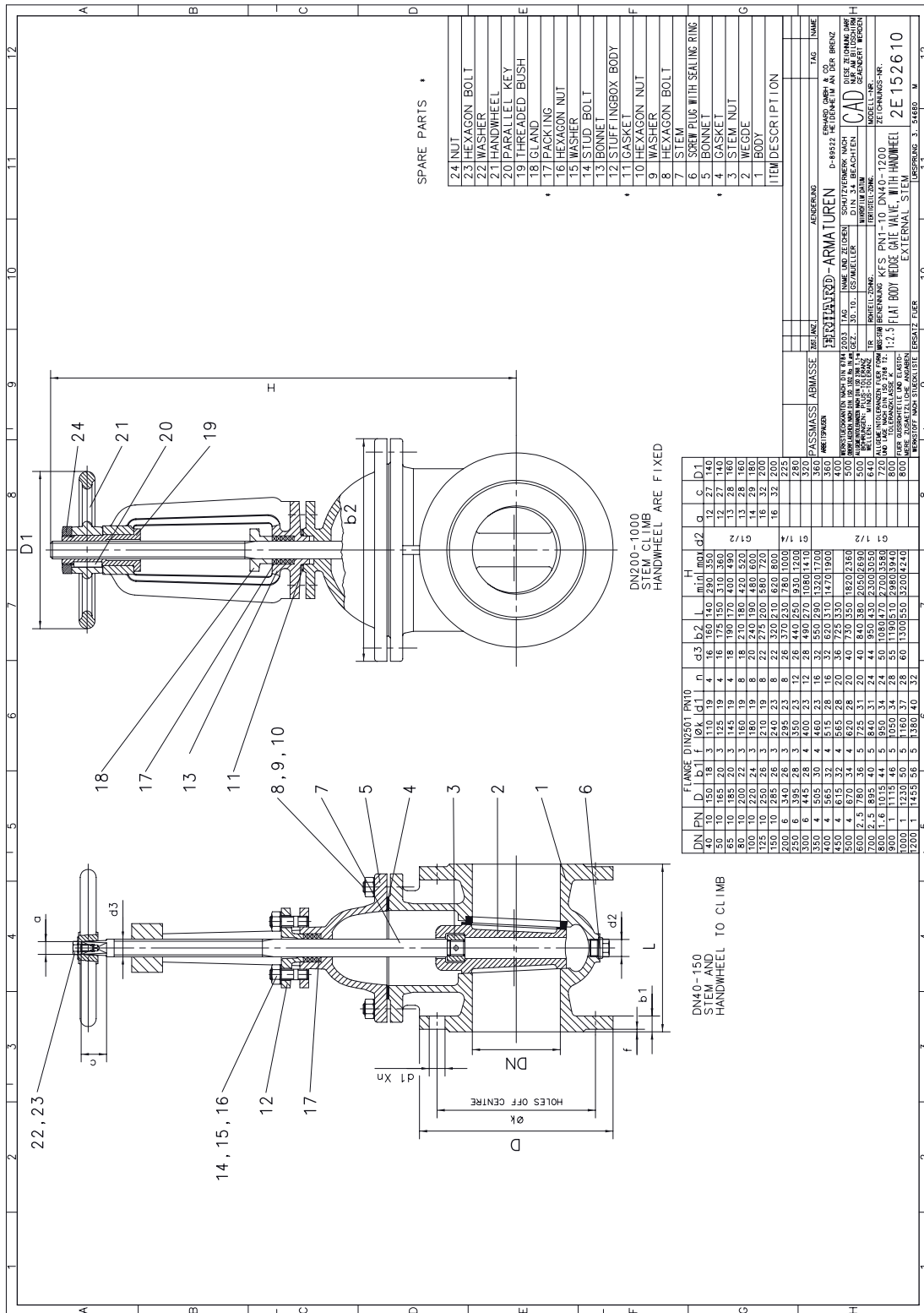
Operating Instructions for Wedge Gate Valve, Metallically Seated, With Non-rising or Rising Stem

7 Drawing with spare parts list (2e152779)



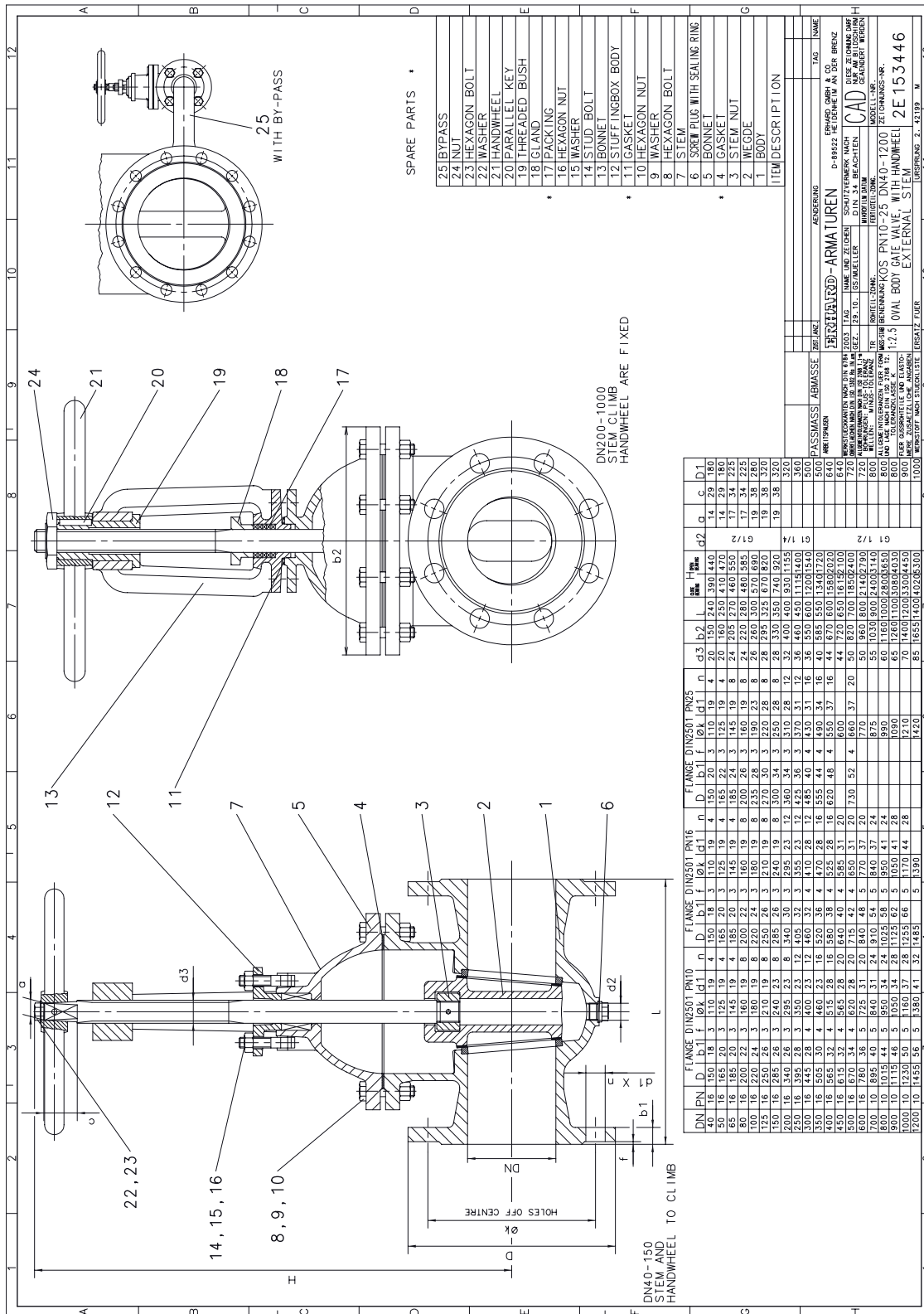
Operating Instructions for Wedge Gate Valve, Metallically Seated, With Non-rising or Rising Stem

Drawing with spare parts list (2e152610)



Operating Instructions for Wedge Gate Valve, Metallically Seated, With Non-rising or Rising Stem

Drawing with spare parts list (2e153446)



Operating Instructions for Wedge Gate Valve, Metallically Seated, With Non-rising or Rising Stem

Drawing with spare parts list (2e152825)

